

# Boot from backup firmware

Lewis Lee

Version 1.2 (DEC, 2008)

**QSAN** Technology, Inc.  
<http://www.qsan.com.tw>  
White Paper# **QWP200803-P100C**

## Introduction

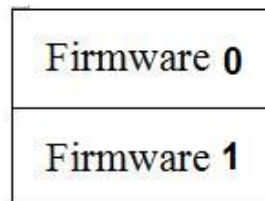
In this document, it describes how to boot from backup firmware with **QSAN P100C** controller. All **QSAN** models can be used within this configuration.

There are two firmware images exist in flash of controller. One is current usage image, and the other is backup one. If the current image cannot boot successfully, the second image can be used instead.

## Environment

**Host OS:** Windows Server 2003 SP2  
**Necessary package:** Hyper Terminal  
**iSCSI target:** QSAN P100C  
**RAM:** 512MB DDR-333  
**Firmware:** 2.3.2 (20080926\_1100)

## Diagram



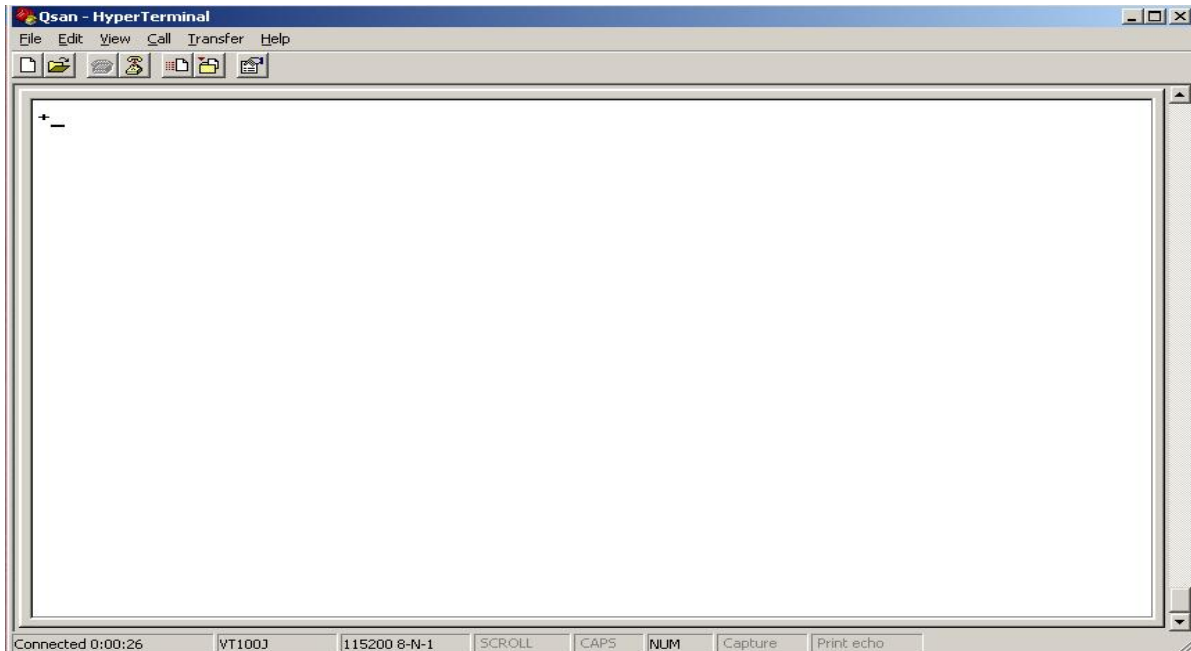
In controller, there is a boot-up pointer to switch from Firmware 0 and Firmware 1. For example, if current boot-up image is Firmware 0, when upgrading a new firmware, the original image is kept and the new image is saved to Firmware 1. At the same time, the point of controller will switch to Firmware 1. So it will boot from Firmware 1 next time.

## Installation

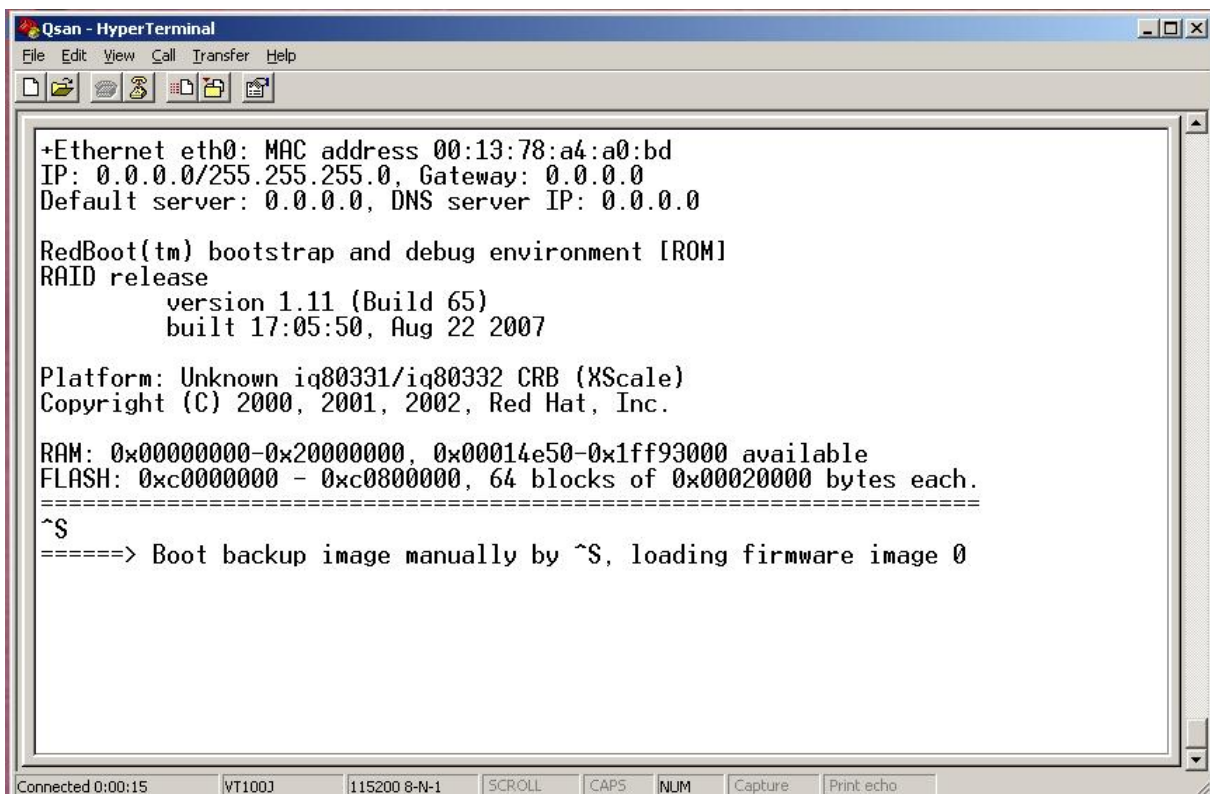
In Windows, there is a built-in Hyper Terminal application. Or any application like Hyper Terminal function would be fine. Then connect serial console into controller.

## Configuration

1. Execute Hyper Terminal application and then power on. When seeing “+” in screen, please press “**Ctrl**” + “**S**” for a while.



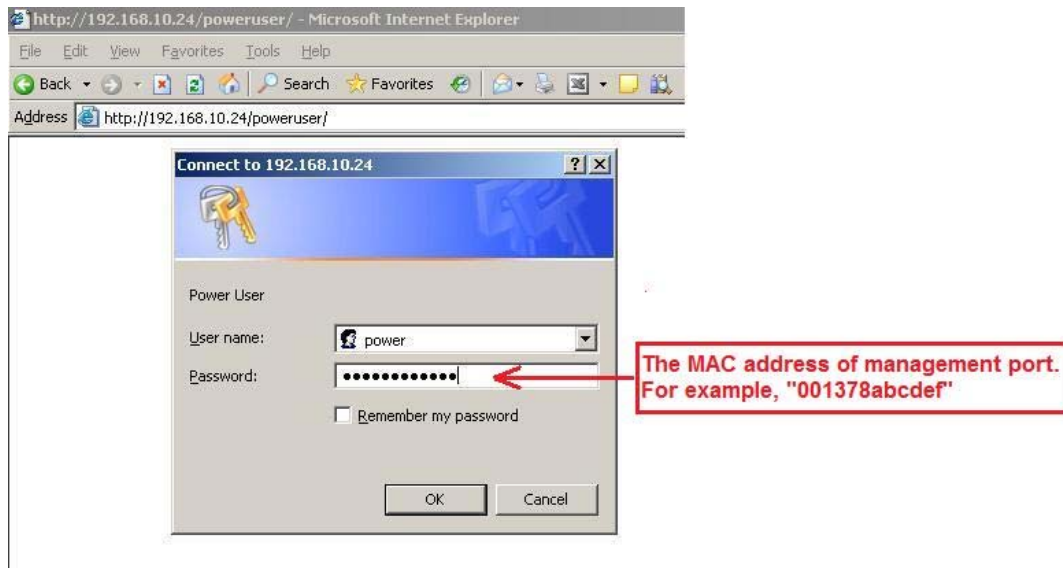
2. The controller will boot up the other firmware automatically. In this example, it's Firmware 0. But it's for temporary, the boot-up pointer of controller does not switch.



3. Because boot-up pointer of controller does not switch. After boot-up successfully, it should be upgraded firmware once. So the boot-up pointer of controller would be normal.
4. **(Optional)** If firmware upgraded would not accept, the other way is to switch boot-up pointer of controller when boot-up next time. Go power user page of web UI. For example: <http://192.168.10.24/poweruser/>

User name: **power**

Password: The MAC address of management port



5. **(Optional)** When entering power user page, click **Yes** button. The boot-up pointer of controller will switch to current Firmware.



**BOOT RECOVERY**

System is running backup firmware instead of default boot firmware.  
Would you like to set it as default boot firmware?

Yes

## Summary

Boot from backup firmware method is for internal use only, please **DO NOT** give it to end user, thank you.

## **Applies to**

- All **QSAN** controllers FW (20080926\_1100)